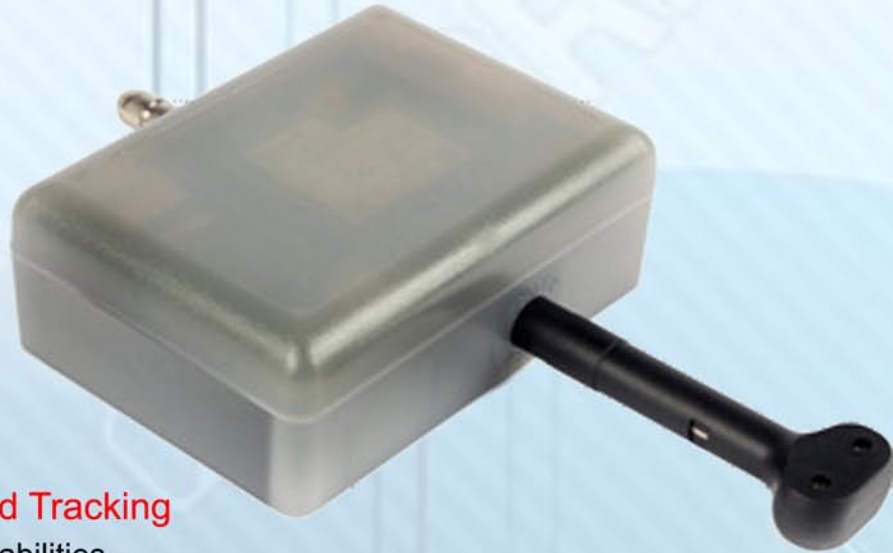


# GT 1000

## Enhanced cargo security and visibility

Cellular-enabled electronic bolt seal



## Embedded Tracking Mode and Standard Tracking

Because of its compact size and powerful capabilities ORBCOMM's GT 1000 can also be used as an embedded tracking device inside a container, truck or the cargo itself

### Enclosure

66mm x 91mm x 25mm (2.6" X 3.6" X 1.0")

### Mass

170 g (6 oz.) with batteries

### Sensors

#### Temperature

-40C (-104F) to +85C (+185F) operating

#### Motion

Simple motion detection

#### Vibration/Shock

3-axis  $\pm 18$ ,  $\pm 6$ ,  $\pm 3$  g/axis, constant monitoring

### Battery

LHION rechargeable, 2000mAh, 3.6V

### Life Expectancy

- 127 days at 1 report per day;
- 74 days at 2 reports per day;
- 19 days at 1-hour reporting

### Door Intrusion

Seal provides more than 2,000 lbs (907kgs; kN) of pull-out strength; bolt cutters required for removal

### Motion Detection

Integral motion sensor (start/stop); independent of accelerometer

### Coding and Authentication

Each seal contains a unique ID number hard coded into its data bank

### Cellular Communications

Quad-band GSM for worldwide coverage, 2-way communications upload and download, and GPRS and SMS with automatic least cost routing

### GPS Receiver

- Cold start: <45 seconds, TTFF (95%)
- Hot start: <10 seconds, TTFF (95%)
- <2.5-meter accuracy

### ZigBee Wireless LAN

- Communicates with all GT wireless sensors
- Mesh networking available
- 2.4 GHz
- ZigBee wireless
- Tx power, max: 1000 mW (USA), 100 mW (Europe), 10 mW (Japan)
- Tx power, min: 1 mW

### Storage

Stores up to 500 reports if cellular is not available

### Compatibility

Operates with other GT Zigbee-enabled devices

### Certifications

FCC part 15 and part 25, ETSI  
EN 300 328, ETSI EN 301 489-1, IP (testing)

**Communicates with wireless sensors**

**Real-time tampering and intrusion alerts**

**Quick and easy installation**

**Global GSM coverage**

**Reusable and chargable**

**Interfaces to other ERP, TMS, WMS, and MIS Systems**

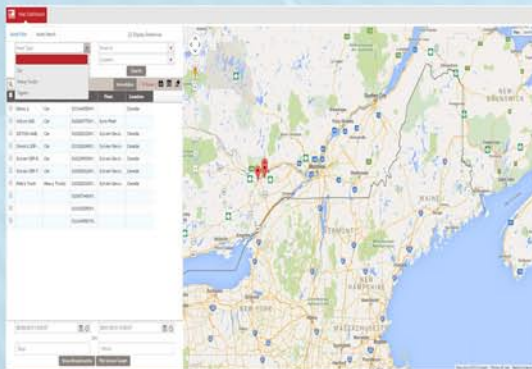
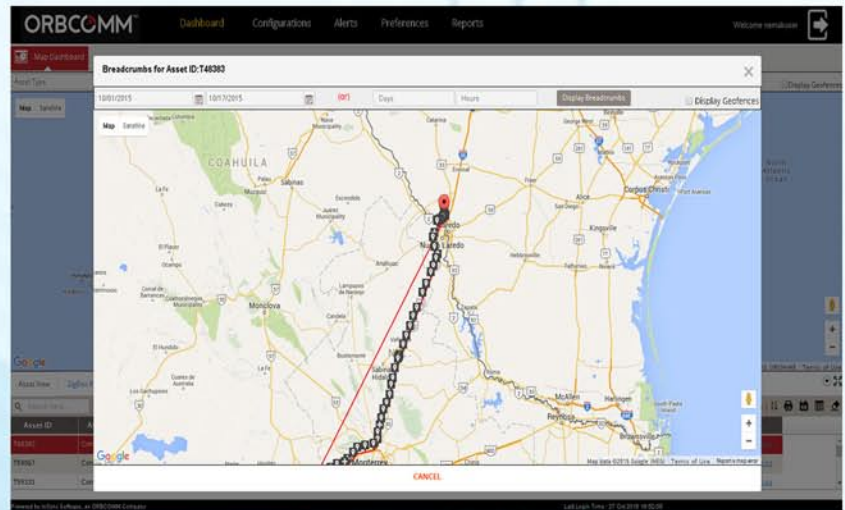


# CARGO SYSTEM

## Cargo Watch Secure

Cargo security and condition monitoring for transportation and logistics.

Comprehensive cargo condition monitoring and chain of custody automation for trailers intermodal container operators and more



### Features

**Location Tracking:** Access cargo historical and real-time position data for complete operational visibility. Use breadcrumb reports to track asset movement and geofences. Enable automated alerts.

**Trip Management:** Track a trip from start to finish. Trips can be started and ended manually, or automatically based on location or time. Configure a trip to automatically send data to an external feed.

**Configurable Reporting Intervals:** Configure reporting intervals based on your specific needs. Receive reports as often as once per minute or as infrequently as once every few days.

**Sensor Data:** Incorporate sensors into the solution to obtain critical cargo condition data such as temperature, humidity, light, vibration and shock in order to ensure product integrity at delivery.

**Event-Based Alerts:** Receive real-time alerts via text or email when specific user-defined conditions are detected, such as:

- Seal tampering
- Door intrusion
- Unplanned stops
- Route deviations
- Out-of-range thresholds

**System Intelligence and Analytics:** By combining trip information and sensor data with advanced reporting capabilities, CargoWatch Secure helps you improve operational efficiency, offer better customer service and minimize losses and claims.

**Sensor Graphs:** View sensor data on a graph. Overlap multiple parameters for advanced data analysis.

